

RANGE	ISOFORM GRAB&GO
TEMP. TOP	HEATED/TILT FRONT
TEMP. BOTTOM	HEATED/OPEN FRONT
MODEL	I-GG-HH-24-14-A003
INSTALLATION	FREESTANDING
HEIGHT	1454mm
WIDTH	1208mm
DEPTH BASE	915mm

TEMPERATURE RANGE	+65°C – +80°C
RECOMMENDED CORE PRODUCT TEMPERATURE	+65°C – +80°C
ENVIRONMENTAL TEST CONDITIONS	22°C / 65% RH

## FEATURES

- High energy efficiency: estimated 4.36 kWh per hour (average)
- Cabinet operating temperature range +65°C - +80°C  
Recommended core product temperature +65°C - +80°C

- Sleek black cabinet frame with silver pinstripe (default) on front, rear and doors and grille to front panel
- 25,000 hour LED lighting system (colour: natural) at 2758 lumens per metre in both top and bottom displays

### Tilt Front Heated Top Display

- Engineered with energy-efficient, fan assisted Thermofin heating technology to provide fast heat-up time and gentle heating for extended product shelf life
- Tilt front glass provides easy access for cleaning
- Base ticket strip: 30mm (height) with caution decal applied

### Open Front Heated Bottom Display

- Two fixed **IWave** shelf is brushed stainless steel and is fitted with ticket strips front and rear: 30mm (height) with caution decal applied. Shelf is supplied with 3 x 375mm removable aluminium drip trays, powdercoated black (default)
- Base ticket strip: 30mm (height) with caution decal applied
- FPG **IWave** heating technology uses low-wattage quartz infrared elements complemented with a heating coil in the base for even temperature distribution and extended shelf life
- Safer for consumers - display surfaces are maintained < +65°C

### Operational Excellence

- Dual Action Doors (staff side) - doors both slide and swing for full-width access to the cabinet
- Constructed from stainless and mild steel with fully double-glazed, toughened safety glass for maximum energy efficiency, climate control and durability
- Fitted with an electronic controller for energy efficiency
- Fitted with unidirectional rollers and adjustable stabilisers



Showing : Isoform Grab&Go 2758mm width x 1454mm height  
Top Display: Heated, tilt front. Bottom Display: Heated, open front with **IWave** shelf

## OPTIONS & ACCESSORIES

Contact a [FPG Sales Representative](#) for our full range, including:

- Flat front panel to base
- Pinstripe colour
- Stainless steel product trays with three sides
- Stainless steel pie chutes
- Branded decals
- Sides: mirror effect
- LED lighting colour: Warm white
- Lockable castors

### Top Display

- Additional shelf
- Shelf trays: Toughened safety glass or brushed stainless steel. Colour and woodprint options available for steel shelf trays

### Bottom Display

- Drip trays: Colour and woodprint options available
- Angled base insert

## HEATED DATA

	TEMPERATURE RANGE	RECOMMENDED CORE PRODUCT TEMPERATURE	ENVIRONMENTAL TEST CONDITIONS	HEATING
TOP DISPLAY	+65°C - +80°C	+65°C - +80°C	22°C / 65% RH	Fan assisted Thermofin
BOTTOM DISPLAY				IWave low-wattage infrared quartz elements

## ELECTRICAL DATA

MODEL	VOLTAGE	PHASE	CURRENT	E24H (kWh)	Estimated kWh per hour (average)	IP RATING	MAINS		LED LIGHTING		
							CONNECTION	CONNECTION PLUG <sup>1</sup>	HOURS	LUMENS	COLOUR
I-GG-HH-24-14-A003	220-240 V	Single	32.8 A	104.64	4.36	IP 22	Fixed wiring <sup>1</sup>	N/A	25,000	2758 per metre	Natural

<sup>1</sup>Please see manual for more information.

## CAPACITY, ACCESS & CONSTRUCTION

	SHELF DISPLAY AREA	LEVELS	ACCESS FRONT	ACCESS REAR	REAR DOORS	CHASSIS CONSTRUCTION
TOP DISPLAY	1.03 m²	Base only	Tilt front	Dual Action doors	4	Stainless 304 and mild steel
BOTTOM DISPLAY	1.93 m²	1 Shelf + Base	Open front	Dual Action doors	4	

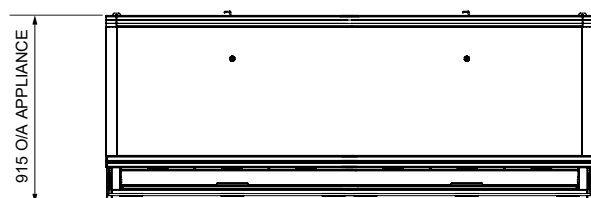
## DIMENSIONS

MODEL	H x W x D mm (Uncrated)	MASS (Uncrated)
I-GG-HH-24-14-A003	1454 x 2358 x 915	- kg

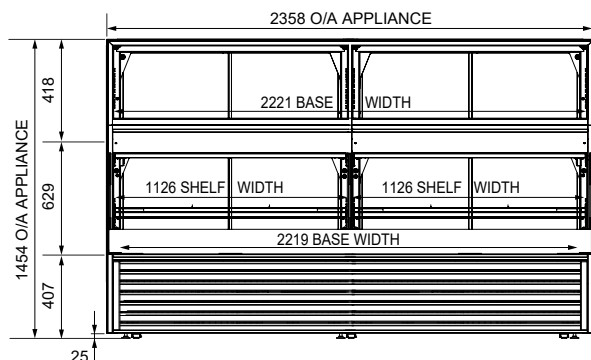
Crated weights and dimensions vary. Please contact us for information on your shipment.

**Installation note:** Designed to be installed as a stand alone unit.

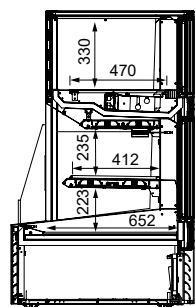
Model cutout dimensions: I-GG-HH-12-14 models require 2368 x 920mm benchtop cutout. Joinery height 407mm (see product manual for installation guide).



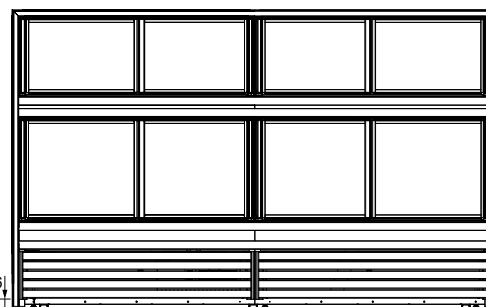
PLAN VIEW



FRONT ELEVATION



SECTION VIEW



REAR ELEVATION

For information on technical data and installation guidelines please contact [support@fpgworld.com](mailto:support@fpgworld.com)

In line with our policy to continually develop, improve and support our products, Future Products Group Ltd reserves the right to change specifications and design without notice.

Have a question? Please email us at [sales@fpgworld.com](mailto:sales@fpgworld.com) or visit [www.fpgworld.com](http://www.fpgworld.com) for full contact details for your region.

