

INLINE SERIES - 5000 AMBIENT 800mm CURVED FREESTANDING

MODELS

- IN-5A08-CU-SD-FS | 5000 Series ambient 800mm curved freestanding, with sliding glass doors
- IN-5A08-CU-TD-FS | 5000 Series ambient 800mm curved freestanding, with a tilt glass door

OPTIONS [F=Factory Fitted]

- Lockable castors (F)
- Stainless steel base surround (F)
- Joinery base surround (F)

ACCESSORIES [A=Accessory]

- Small goods tray (A)
- Toughened glass shelves (A)
- Angled base shelf (A)
- Thermal divider panels (A)
- Base ends (A)
- Rear deck assembly with no bag and tong holder (A)
- Rear deck assembly with 1 x bag and 2 x tong holders (A)

OVERVIEW

This premier heavy duty cabinet is trusted by multi-national corporate clients worldwide. The cabinet can have 120 door openings an hour while still maintaining core product temperatures. Increased capacity, robust design and individual shelf lighting enhance product offerings. Freestanding and modular units allow any combination of heated, refrigerated and controlled ambient line-ups. Lowest possible cost of ownership and up to 30% energy saving features.

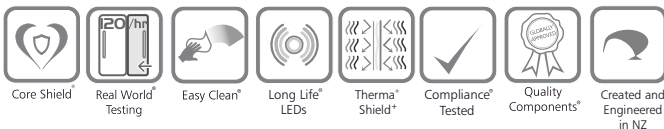
FEATURES

- **High energy efficiency - 0.06 kWh per hour average**
- Maintains ambient core product temperature with up to 120 door openings per hour
- Sliding doors (staff side) and sliding doors or tilt door options (customer side)
- Fan assist air circulation to introduce fresh air into the cabinet
- Three adjustable shelves and base for product display
- 50,000 hour LED lighting to cabinet top and shelves
- Adjustable 150mm feet (+30mm adjustment)
- Unique shelf mounted ticket strip front and rear
- Toughened safety glass
- Designed to integrate into custom joinery



SHOWING : 5000 SERIES AMBIENT 800mm CURVED FREESTANDING, WITH TILT DOOR

KEY SELLING FEATURES



IN-5A08-CU-SD-FS	CLIMATE CLASS	N max 32°C / 70% RH	TEMPERATURE RANGE	Ambient
IN-5A08-CU-TD-FS				

Designed to meet and exceed the following compliances and approvals : NSF, EN 55014, EN55014-1, EN 55014-2, EN 61000, EN 61000-3-2, EN 61000-3-3, IEC 60335, IEC 60335-1.



VIEW ONLINE AT FPGWORLD.COM



INLINE SERIES - 5000 AMBIENT 800mm CURVED FREESTANDING

SPECIFICATIONS

Refrigeration Data

	CLIMATE CLASS	CORE PRODUCT TEMP RANGE
IN-5A08-CU-SD-FS	N max 32°C / 70% RH	Ambient
IN-5A08-CU-TD-FS	N max 32°C / 70% RH	Ambient

Electrical Data

	VOLTAGE	PHASE	CURRENT	kWh per hour [average]	MAINS CONNECTION	MAINS CONNECTION PLUG	IP RATING	LED LIGHTING
IN-5A08-CU-SD-FS	220-240 V	Single	0.4 A	0.06 kWh per hour	3 metre 3 core cable	10 amp, 3 pin plug	IP 22	50,000 hr LED
IN-5A08-CU-TD-FS	220-240 V	Single	0.4 A	0.06 kWh per hour	3 metre 3 core cable	10 amp, 3 pin plug	IP 22	50,000 hr LED

Display

	DISPLAY AREA	NO. OF SHELVES	ACCESS - FRONT	ACCESS - REAR	CONSTRUCTION
IN-5A08-CU-SD-FS	1.15m ²	3 + Base	Sliding doors	Sliding doors	304 Stainless Steel
IN-5A08-CU-TD-FS	1.15m ²	3 + Base	Tilt door	Sliding doors	304 Stainless Steel

Dimensions [Uncrated and Crated]

	H x W x D mm [Uncrated]	MASS [Uncrated]	H x W x D mm [Crated]	MASS [Crated]	CUBIC VOLUME [Crated]
IN-5A08-CU-SD-FS	1443 x 807 x 791	108 kg	1603 x 881 x 865	173.6 kg	1.22m ³
IN-5A08-CU-TD-FS	1443 x 807 x 791	108 kg	1603 x 881 x 865	173.6 kg	1.22m ³

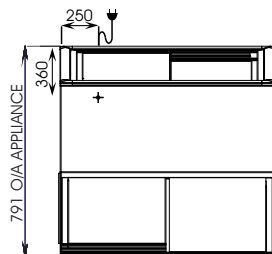
Installation note:

Model cutout dimensions:

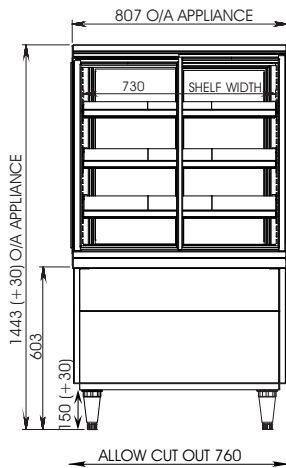
- IN-5A08-CU-SD-FS and IN-5A08-CU-TD-FS models require 760 x 725mm benchtop cutout. Joinery height 603mm (see product manual for installation guide)

In line with policy to continually develop and improve its products, Future Products Group reserves the right to change specifications and design without notice.

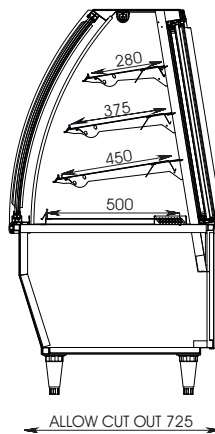
For more information and technical data, including installation documents, please refer to the website - www.fpgworld.com



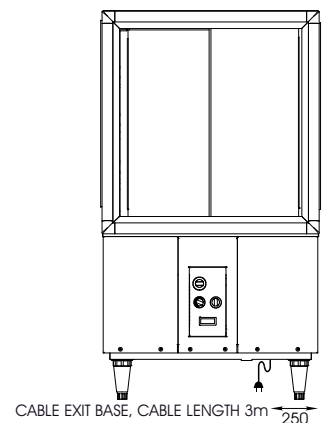
PLAN VIEW



FRONT ELEVATION



SECTION VIEW



REAR ELEVATION