

INLINE

BARISTA



Operational
excellence



**Trusted.
For Life.**



Trusted.
For Life.



DAIRY
COMPLIANT

INLINE

BARISTA

Innovative milk storage for busy café environments.

Do you offer barista-made coffee? Are you looking for ways to improve your operational efficiency while improving health and safety outcomes for your team?

Inline Barista is a high-capacity milk storage cabinet. Its thoughtful design with a quick access flap opening at thigh height provides your barista very quick and easy access to milk. Unlike traditional underbench fridges there is no need to bend right down - so no more back pain or sore knee joints!

And what's more, milk maintains its core product temperature at an average of +2 - +4° C for **two and a half hours with the cabinet access flap open**. It ticks all the boxes!

Inline Barista – easy access to milk, where and when you need it.





Trusted.
For Life.

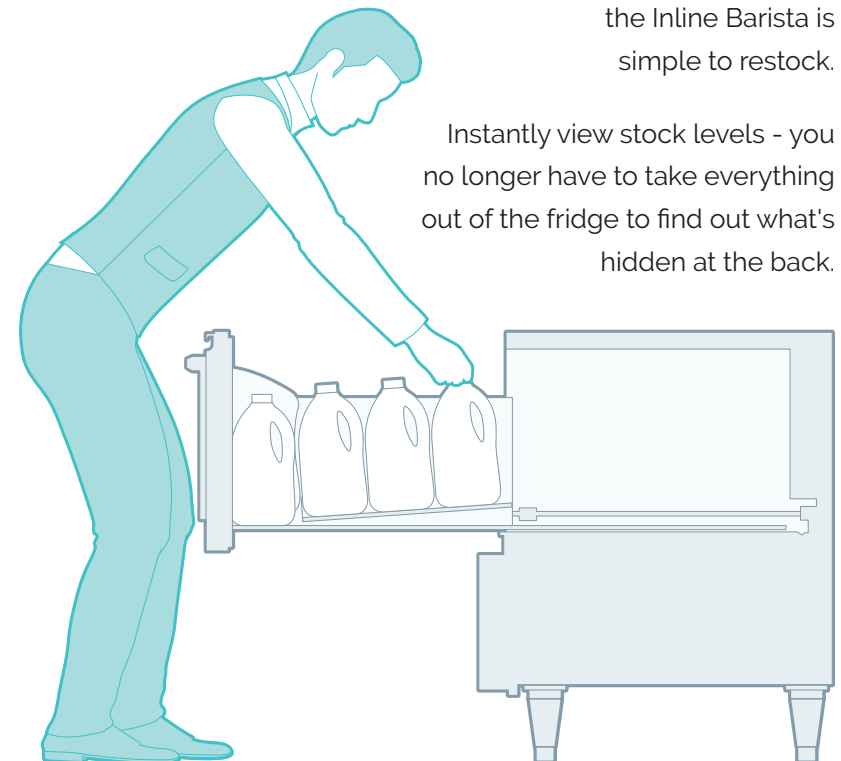
ERGONOMIC DESIGN

The Inline Barista is both comfortable and safe to use.

The access flap provides quick and safe access to milk when making coffees.

It is also a breeze to stock. Close the flap and slide out the drawer. It couldn't be easier.

Managing stock rotation is straightforward. With an angled base fitted with gravity feed matting and adjustable guides, the oldest milk bottles are always located at the front.



Slide out the drawer and the Inline Barista is simple to restock.

Instantly view stock levels - you no longer have to take everything out of the fridge to find out what's hidden at the back.



The flap allows quick and safe access to the bottles - no crouching or kneeling in busy traffic areas.

The angled base, fitted with gravity feed matting and adjustable guides, means the bottles are always to hand - located right at the front.



With an underbench fridge it's back-breaking work just to see what's inside, let alone find the correct milk or restock.



Trusted.
For Life.

NEGOTIATE YOUR OWN MILK SUPPLY

Unlike expensive automated milk delivery systems which may involve single-source bladders, you are not tied into milk supply. You have the flexibility to negotiate contestable supply and hold a variety of milks and other refrigerated products of different sizes.



GREAT
STORAGE
CAPACITY

Inline Barista can hold up to:

48L*

*24 x 2L bottles

257mm (H) x 131mm (W) x 90mm (D)



INLINE

BARISTA

Holds a
variety of milks
and other
refrigerated
products of
different sizes.



**Trusted.
For Life.**

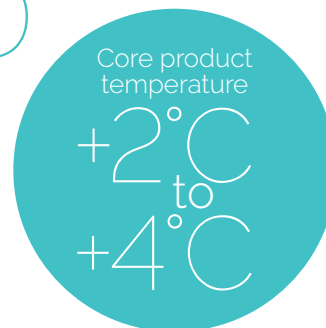


UNIDIRECTIONAL TWIN ROLLERS AID MANEUVERABILITY

COMPLIANCE ASSURED

Inline Barista is dairy safe.

Milk is maintained at an average of +2°C - +4°C core product temperature for Climate Class 4: +30°C / 55% RH - even with the access flap open for two and a half hours. Easily enough time to cover those periods of peak demand.



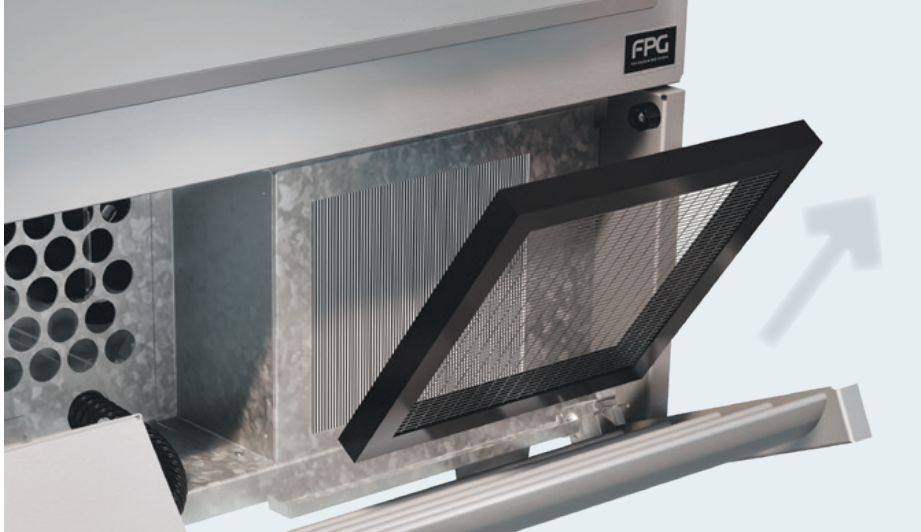
UNDERBENCH INSTALLATION

Inline Barista is designed to be positioned under the bench.

The option to fit the cabinet with rollers makes it easy to push the cabinet into a cavity. Alternatively adjustable legs can be fitted to provide access under the cabinet for cleaning the floor.

During installation, an adjustable anti-tilt bolt is fitted to stabilise the cabinet when the drawer is open.

The cabinet's condensate is plumbed to waste which contributes to the cabinet's high energy efficiency.



EASY ACCESS PRE-FILTER FOR WEEKLY CLEANING

INLINE

BARISTA

STRAIGHT-FORWARD TO CLEAN

The cabinet is composed of durable brushed stainless steel and fitted with a splash proof panel over the front controls. Cleaning is straightforward. Removable components can be washed and the cabinet wiped down.

The Inline Barista is engineered with an accessible compressor radiator pre-filter. The pre-filter catches debris and dust that is drawn in with the fresh air intake, reducing the risk of the refrigeration system clogging up. Weekly cleaning of the pre-filter by operators is important: it will ensure the refrigeration system works optimally and extend the life of your cabinet.

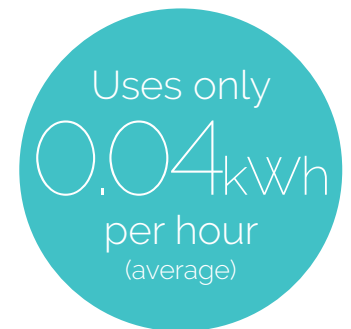
SUSTAINABILITY



Have peace of mind knowing that the refrigerant used in the Inline Barista is eco-friendly R290.

Using only 0.04kWh per hour (average) for Climate Class 4, Inline Barista is energy-efficient. Great for the environment. Great for lower power bills.

Energy efficient EC fans, the automated on/off refrigeration cycle and superior insulation all contribute to the cabinet's energy efficiency.





Trusted.
For Life.

PREVENTATIVE MAINTENANCE & WARRANTY

It's easy to maintain the energy efficiency of your cabinet, extend its life, and keep your warranty valid. Simply:

- Perform weekly operator tasks including cleaning the cabinet's pre-filter.
- Book an annual deep clean of the condenser coil and cabinet inspection by a refrigeration engineer/technician.

Carry out these straightforward actions and your cabinet will continue to perform at its best.

The warranty term is two years for the cabinet and three years for the condenser. Warranty terms and conditions are published in the manual.



TRUSTED FOR LIFE

Well supported.

FPG Technical Support is available online and by phone. We publish online resources including 'How To' videos to support the technical service providers of our customers. We also publish comprehensive manuals, offer training via online platforms, and recommend the spare parts the service provider should hold locally to service the cabinets.

FPG stands by our cabinets for their lifetime – that means spare parts and support will always be available to your technical service providers.



End-of-life recycling.

Cabinets can be dismantled and the components such as the sheet metal can be recycled. We estimate up to 85% by volume can be recycled.

FPG engineers all cabinets to meet international standards.

International safety standards for electrical refrigerated appliances: IEC 60335-1, IEC 60335-2-89, and the equivalent country-specific standards including AS/NZS and BS EN ISO.

International standards for electromagnetic compatibility/emissions: CISPR 14-1, and the equivalent country-specific standards including AS/NZS CISPR and BS EN ISO 55014-1.

Essential safety requirements: AS/NZS 3820 and AS/NZS 4417.

Energy efficiency for refrigerated appliances:
MEPS (Australia/New Zealand).
EPREL (Europe/United Kingdom).



Some countries permit self-declaration while other countries may require external testing and certificates of conformity.

Please contact us for more information.



**Trusted.
For Life.**



C-STORE



CAFE/BAKERY
QSR



FMCG



HOSPITALITY



SPECIALTY
FOOD SERVICE



SUPERMARKET

Worldwide
contact
details:



fpgworld.com
sales@fpgworld.com