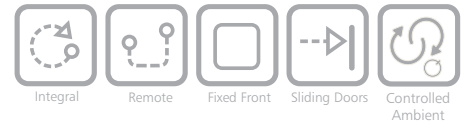


## INLINE SERIES - 3000 CONTROLLED AMBIENT 1800mm CURVED IN COUNTER



### MODELS

- IN-3CA18-CU-FF-IC-I | 3000 Series controlled ambient 1800mm curved, with fixed front glass, in counter, with integral condensing unit
- IN-3CA18-CU-SD-IC-I | 3000 Series controlled ambient 1800mm curved, with sliding glass doors, in counter, with integral condensing unit
- IN-3CA18-CU-FF-IC-R | 3000 Series controlled ambient 1800mm curved, with fixed front glass, in counter, for remote condensing unit
- IN-3CA18-CU-SD-IC-R | 3000 Series controlled ambient 1800mm curved, with sliding glass doors, in counter, for remote condensing unit

### OPTIONS [F=Factory Fitted]

- Auto condensate removal (F)
- EPR valve or Solenoid valve for remote connection (F)
- 50,000 hour LED lighting to shelves (F)

### ACCESSORIES [A=Accessory]

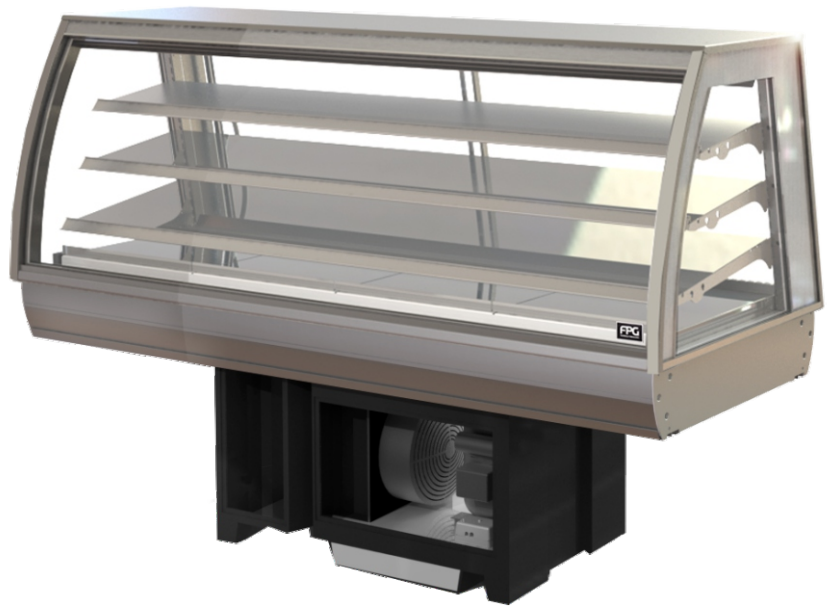
- Toughened glass shelves (A)
- Angled base shelf (A)
- Rear decks (A)
- Thermal divider panels (A)

### OVERVIEW

Created as a medium duty solution for café, kiosk and c-store, **Inline 3000 Series** cabinets provide a plug and go solution. A range of installation options is available to make it easy to integrate the display cabinets in your retail space: in counter, on counter, or freestanding. This Cabinet Series is tested to 60 door openings an hour while still maintaining core product temperatures for food safety. Developed using FPG's world class design expertise to extend shelf life and help you sell more. Optimised for energy efficiency and to deliver the lowest total cost of ownership over the life of the cabinet. A proven performer.

### FEATURES

- High energy efficiency - 0.68 kWh per hour average
- Maintains +16°C - +18°C core product temperature with up to 60 door openings per hour
- Sliding doors (staff side) and fixed front or sliding doors options (customer side)
- Three adjustable shelves and base for product display
- 50,000 hour LED lighting in cabinet top
- High internal humidity maintains and extends product quality
- Fully double glazed for energy efficiency
- Unique shelf mounted ticket strip front and rear
- Remote display cabinet supplied with standard R134A TX valve
- Freeflow air technology (no front counter vents required)
- Also available as a on counter model or a freestanding model with a chassis



SHOWING : 3000 SERIES CONTROLLED AMBIENT 1800mm, WITH FIXED FRONT, IN COUNTER, WITH INTEGRAL CONDENSING UNIT

|                     |                               |                                  |                   |             |
|---------------------|-------------------------------|----------------------------------|-------------------|-------------|
| IN-3CA18-CU-FF-IC-I | ENVIRONMENTAL TEST CONDITIONS | CLIMATE CLASS 3<br>25°C / 60% RH | TEMPERATURE RANGE | +16°C-+18°C |
| IN-3CA18-CU-SD-IC-I |                               |                                  |                   |             |
| IN-3CA18-CU-FF-IC-R |                               |                                  |                   |             |
| IN-3CA18-CU-SD-IC-R |                               |                                  |                   |             |

FPG refrigerated, controlled ambient and ambient food display cabinets are designed to meet and exceed:

- International safety standards for electrical appliances: IEC 60335-1, IEC 60335-2-89, and the equivalent country-specific standards including AS/NZS, BS EN and UL 471.
  - International standards for electromagnetic compatibility/emissions: CISPR 14-1, and the equivalent county-specific standards including AS/NZS CISPR and BS EN 55014-1.
  - Essential safety requirements: AS/NZS 3820 and AS/NZS 4417.
  - Energy efficiency for refrigerated appliances: MEPS (Australia/New Zealand).
- Please contact FPG to discuss your requirements for meeting country-specific standards.



FPGWORLD.COM



## INLINE SERIES - 3000 CONTROLLED AMBIENT 1800mm CURVED IN COUNTER

### SPECIFICATIONS

#### Refrigeration Data

|                     | ENVIRONMENTAL TEST CONDITIONS   | CORE PRODUCT TEMP RANGE | REFRIGERANT                        | REFRIGERANT CHARGE | REMOTE CONNECTION                     | CONDENSATE REMOVAL |
|---------------------|---------------------------------|-------------------------|------------------------------------|--------------------|---------------------------------------|--------------------|
| IN-3CA18-CU-FF-IC-I | Climate Class 3 - 25°C / 60% RH | +16°C - +18°C           | R134A                              | See serial label   | N/A                                   | Manual/Auto*       |
| IN-3CA18-CU-SD-IC-I | Climate Class 3 - 25°C / 60% RH | +16°C - +18°C           | R134A                              | See serial label   | N/A                                   | Manual/Auto*       |
| IN-3CA18-CU-FF-IC-R | Climate Class 3 - 25°C / 60% RH | +16°C - +18°C           | R134A (unless otherwise specified) | N/A                | TX valve, EPR valve*, Solenoid valve* | N/A                |
| IN-3CA18-CU-SD-IC-R | Climate Class 3 - 25°C / 60% RH | +16°C - +18°C           | R134A (unless otherwise specified) | N/A                | TX valve, EPR valve*, Solenoid valve* | N/A                |

\*Option or Accessory

Please note: Refrigeration duty; 1,000W @ -5°C SST & 35°C condensing

Please note: Remote condensing unit not supplied

#### Electrical Data

|                     | VOLTAGE   | PHASE  | CURRENT | kWh per hour [average] | MAINS CONNECTION     | MAINS CONNECTION PLUG | IP RATING | ACR POWER * | ACR CURRENT* | LED LIGHTING  |
|---------------------|-----------|--------|---------|------------------------|----------------------|-----------------------|-----------|-------------|--------------|---------------|
| IN-3CA18-CU-FF-IC-I | 220-240 V | Single | 5.2 A   | 0.68 kWh per hour      | 3 metre 3 core cable | 10 amp, 3 pin plug    | IP 20     | 400 W       | 1.7 A        | 50,000 hr LED |
| IN-3CA18-CU-SD-IC-I | 220-240 V | Single | 5.2 A   | 0.68 kWh per hour      | 3 metre 3 core cable | 10 amp, 3 pin plug    | IP 20     | 400 W       | 1.7 A        | 50,000 hr LED |
| IN-3CA18-CU-FF-IC-R | 220-240 V | Single | 0.6 A   | -                      | 3 metre 3 core cable | 10 amp, 3 pin plug    | IP 20     | N/A         | N/A          | 50,000 hr LED |
| IN-3CA18-CU-SD-IC-R | 220-240 V | Single | 0.6 A   | -                      | 3 metre 3 core cable | 10 amp, 3 pin plug    | IP 20     | N/A         | N/A          | 50,000 hr LED |

\*Option or Accessory

Auto Condensate Removal = ACR

#### Display

|                     | DISPLAY AREA      | NO. OF SHELVES | ACCESS - FRONT | ACCESS - REAR | DOOR OPENINGS @ +15°C - +18°C | CONSTRUCTION        |
|---------------------|-------------------|----------------|----------------|---------------|-------------------------------|---------------------|
| IN-3CA18-CU-FF-IC-I | 2.2m <sup>2</sup> | 3 + Base       | Fixed front    | Sliding doors | 60 openings per hour          | 304 Stainless Steel |
| IN-3CA18-CU-SD-IC-I | 2.2m <sup>2</sup> | 3 + Base       | Sliding doors  | Sliding doors | 60 openings per hour          | 304 Stainless Steel |
| IN-3CA18-CU-FF-IC-R | 2.2m <sup>2</sup> | 3 + Base       | Fixed front    | Sliding doors | 60 openings per hour          | 304 Stainless Steel |
| IN-3CA18-CU-SD-IC-R | 2.2m <sup>2</sup> | 3 + Base       | Sliding doors  | Sliding doors | 60 openings per hour          | 304 Stainless Steel |

#### Dimensions [Uncrated and Crated]

|                  | H x W x D mm [Uncrated] | MASS [Uncrated] | H x W x D mm [Crated] | MASS [Crated] | CUBIC VOLUME [Crated] |
|------------------|-------------------------|-----------------|-----------------------|---------------|-----------------------|
| IN-3CA18-CU-FF-I | 1161 x 1803 x 663       | 160 kg          | 1321 x 1877 x 737     | 249 kg        | 1.83m <sup>3</sup>    |
| IN-3CA18-CU-SD-I | 1161 x 1803 x 663       | 160 kg          | 1321 x 1877 x 737     | 249 kg        | 1.83m <sup>3</sup>    |
| IN-3CA18-CU-FF-R | 769 x 1800 x 661        | 160 kg          | 929 x 1877 x 737      | 206 kg        | 1.29m <sup>3</sup>    |
| IN-3CA18-CU-SD-R | 769 x 1800 x 661        | 160 kg          | 929 x 1877 x 737      | 206 kg        | 1.29m <sup>3</sup>    |

#### Installation note:

Model cutout dimensions:

- IN-3CA18-CU-FF-IC-I and IN-3CA18-CU-SD-IC-I models require 1780 x 645mm benchtop cutout (see product manual for installation guide)
- IN-3CA18-CU-FF-IC-R and IN-3CA18-CU-SD-IC-R models require 1780 x 645mm benchtop cutout (see product manual for installation guide)

Unobstructed airflow must be maintained to ensure unit performance and maintain warranty

In line with policy to continually develop and improve its products, Future Products Group reserves the right to change specifications and design without notice.

For more information and technical data, including installation documents, please refer to the website - [www.fpgworld.com](http://www.fpgworld.com)

